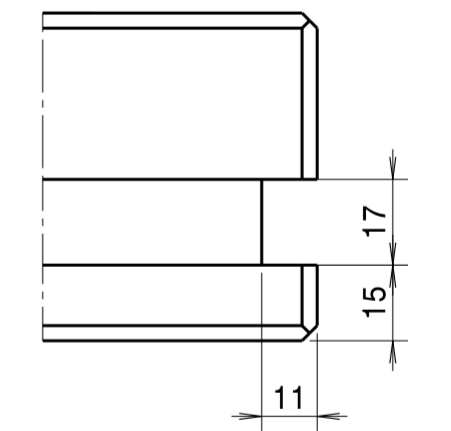
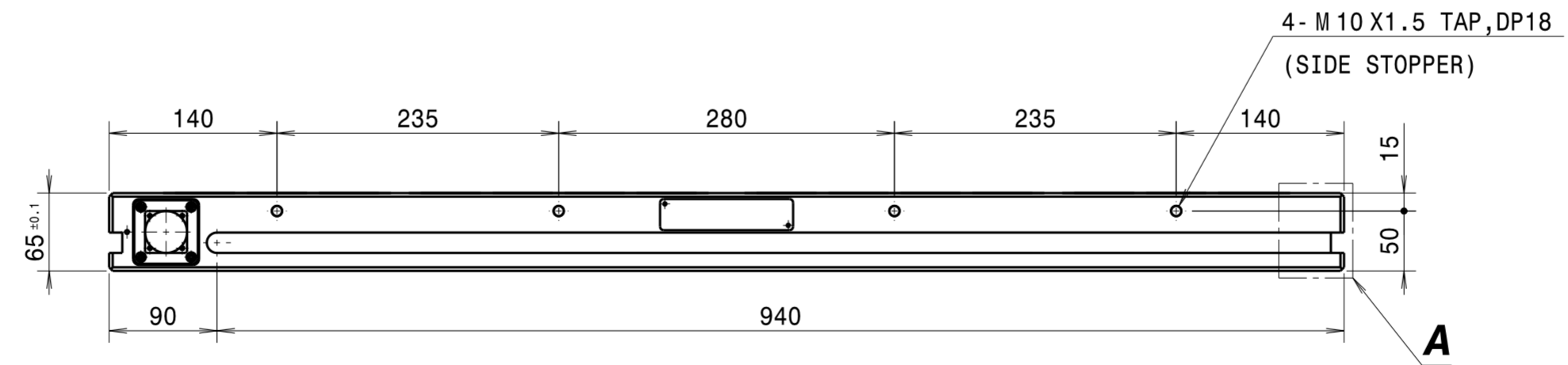
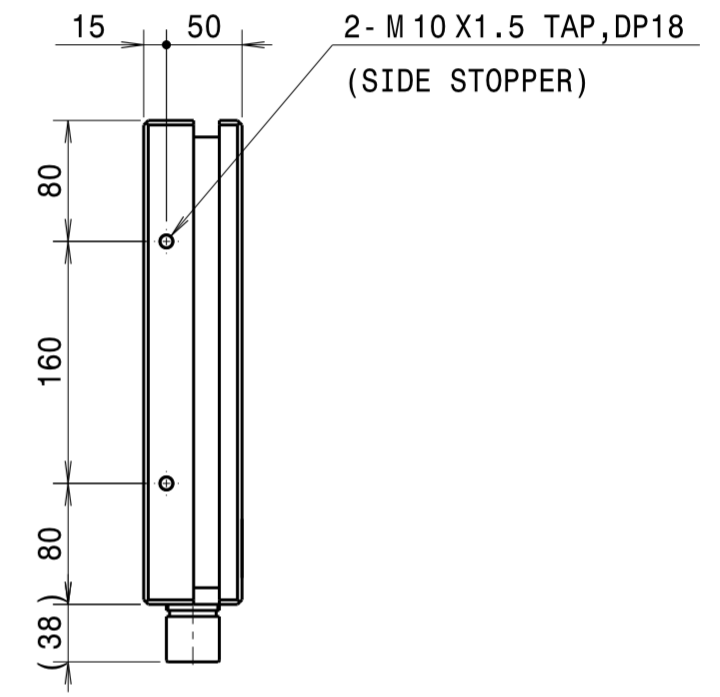
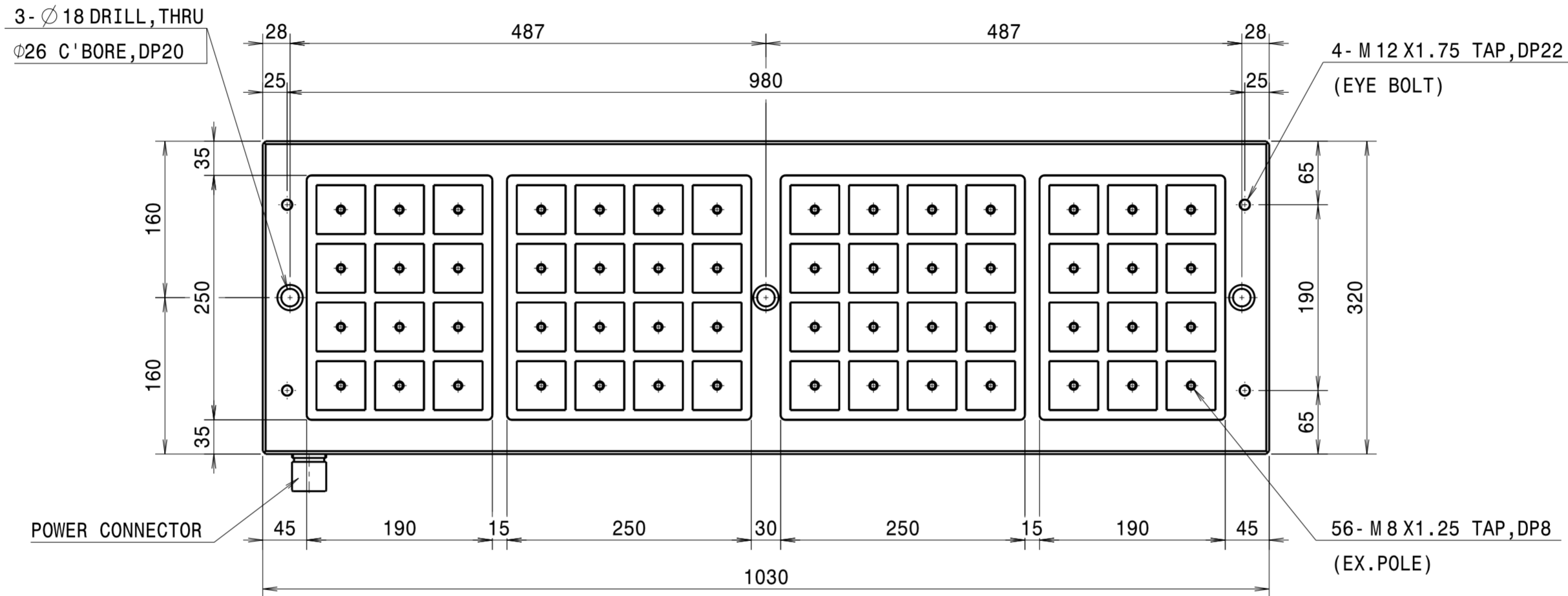
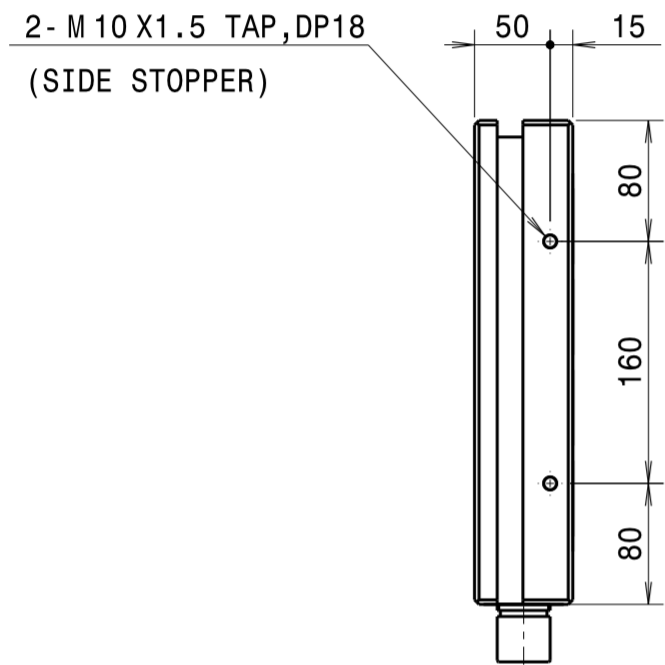
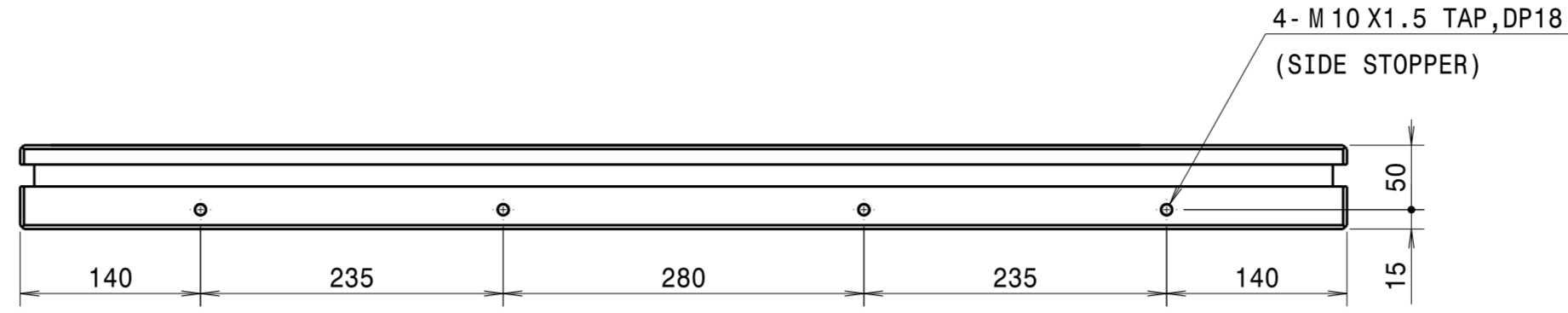
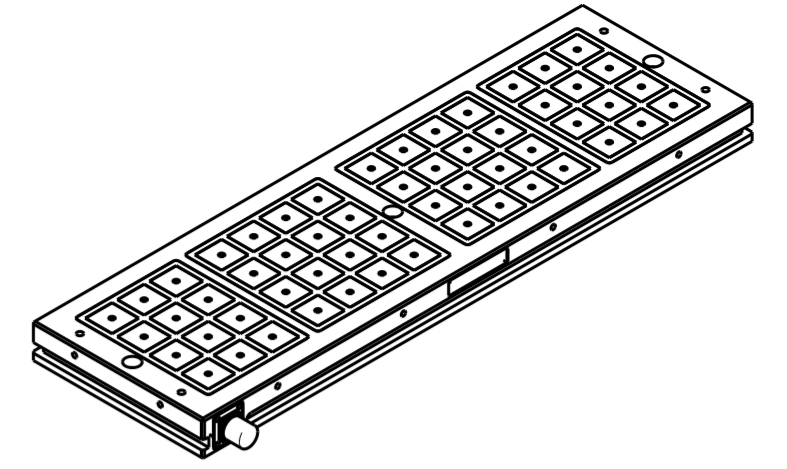


SEP50310 (56POLE)



Detail A (2:3)
(SIDE SLOT)

						SURFACE FINISH	$\sim (\nabla), (\nabla\nabla), (\nabla\nabla\nabla)$	APPROVED	TITLE		SEP5031000-HL_ASS'Y	Q'TY	1	
						GENERAL TOLERANCE (MACHINING)	GENERAL CHAMFER	C1.0	CHECKED	ASS'Y		N/A	W.T (kg)	149
						OVER TO	HEAT TREATMENT HARDNESS	H _{Rc} N/A	CHECKED	MODEL		N/A	SCALE	1/5
						6 - 30	HEAT TREATMENT METHOD	N/A	DESIGNED	REF. DRG. NO.		A3	SEP5031000-HL	1/1
						90 - 120	SURFACE TREATMENT	N/A	DRAWN	When		N/A		
						120 - 315								
						315 - 1000								
						1000 - 2000								
						2000 - 4000								
SUFFIX	MARK	SUBJECT			DATE	NAME	CHECKED							